

## *June / July 2019*

As I promised in the last issue (April 2019) I'm trying to make the newsletter more regular this year and I'm attempting to make it every two months. I may not be able to achieve this aspiration but I'll try.

Again, I have to repeat that getting to a bi-monthly newsletter will depend on you – the members – coming up with material. So please...

### ***News from Neal***

First, a big thank you for everyone's support at Bournemouth, as well as a HUGE thank you to those who could make it to the farewell service for my Father last year at the Poole Crematorium. The cards and notes of condolence were truly appreciated.

I am very glad Dad made it to last year's meet. That was, in fact, his last actual outing. He really enjoyed getting to see everyone again. The Monday after that was when I found out that he had oesophageal cancer and that it was inoperable for someone of his age and overall health. Sadly, he passed away August 18th. I will forward the service to Ralph at some point as it was truly amazing and incredibly well done.

Without Dad's urgings, I might never have made it to N-Trak UK events! Waaay back in the dark

NMRA meet there. Dad said that he would come along, and we could share expenses, etc. We had a great time, I got to meet Barry, Ray, little Barry, and the rest of the gang that made their way up to Bolton. Upon finding a North American trader loony enough to come across the pond, everyone related to UK N-Trak promptly beat me up until I relented and said I would come back. (I think it took one beer in the bar.)

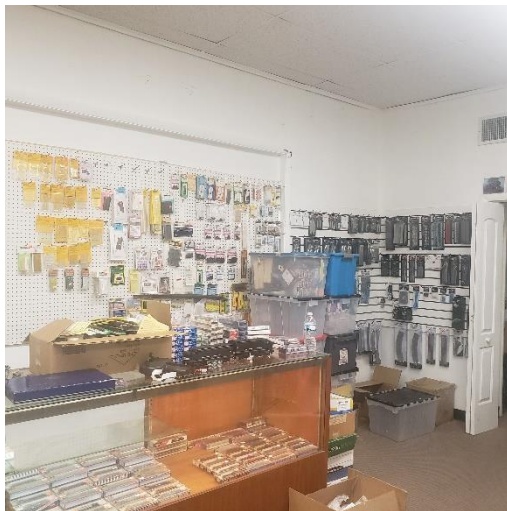
Torquay? Where the Heck is Torquay? Oh, it's near deepest darkest Devon! (Landscope, home at the time of Teddy & Isobel Francis and Shire Scene Models). I can stay with Teddy before and after the show and get a lift to and from the show and ship stuff to Teddy in magic envelopes and... You get the idea! I have never regretted that decision!

This year was the first year I missed attending UK N-trak since then! Dad made it to most of the meets; one year he showed off his live steam 009 engine that ran happily around a Kato oval. Another year saw Joan - Erika's Mother, Tom Mallien - another N Scale nut, some tiny bundle that I think was Norman, and Erika. I did Egham on Saturday with the NMRA while Erika slept under the layout! I think that may have been the first or second year for Russ and Cara as well. I

know the Estate Wagon was very crowded!

Over the 25 years I have had a blast, made many good friends, and drunk more than a few beers. I am looking forward to next year already!! I am sorry to hear about Barry Owen...I hope to see him soon, but I haven't finalized my next trip.

Norman and Dylan - a new hire - and I have been busy rearranging the store so that it actually looks like a store! (Gasp from Norman)



Yes - it's a store



Below are two pictures of the beginnings of an actual layout! After 25 years...um, more

like 45 years... I am finally starting one. Updates if and when I make progress!



A layout underway



Cheers for now.

Neal

## Convention 2019 Videos

Hans Sodenkamp writes from The Netherlands:

'I don't have material for the June/July N-trak UK newsletter but I made two videos of the meeting at Bournemouth this year:

<https://www.youtube.com/watch?v=oOey0PdL7LU>

<https://www.youtube.com/watch?v=5q5OR2yd4jU>

Greetings,  
Hans'

These are excellent videos of trains running on both the layouts at Bournemouth with great sound – Thanks Hans!

## Congratulations to Norman Carnaby



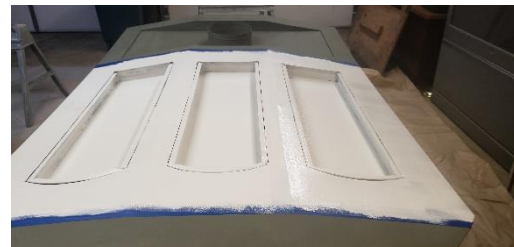
Eagle Scout

Norman is now officially an eagle scout. An award / rank only between 5 and 10 percent of all scouts receive. (*Equivalent to Queen's Scout in the UK - Ed.*) In order to receive this rank, a scout must complete a significant public service project. In Norman's case, this was a memorial to the 37 people killed in a head on trolley collision about 2 miles north of Staunton.

It was an 8'x5' piece of steel fabricated to look like the front of a trolley.



Construction underway



The basic shape

The three windows each have a story board behind them. One details the crash, one lists the victims, and one tells a little bit about the Illinois Traction System. (Illinois Terminal in later days).

It is permanently on display in Staunton's Duda Park, just a few feet away from where the ITS right of way used to be.





Norman's monument stands in Duda Park

*(I'm sure you'll all join me in sending our warmest congratulations to Norman on this magnificent achievement – Ed.)*

### **Out and About**

Chris White caught up with the Gosport Group and Solent Summit at the Horsham show. He sent these pictures:



Strange thing passing the depot



Lots of Horsepower - and Noise!



Shades of Feather River?

### **The 25 Tonner**

This project has actually stalled at the moment. I have to work out how to improve the pick-up situation and how to get more weight inside at sensible points, so it aids traction rather than causing wheelies! However, I'm determined and as soon as time allows, I'll return to this beast – I will get it working properly!

### **Painting Road Vehicles**

While I'm ruminating ferociously on the 25tonner (and waiting to get some modelling space back) I've been looking at, and actually building, some of the stockpiled road vehicle kits. One of the major problems I have with N Scale models is getting a decent paint finish. One that gives a good colour density without drowning all the surface detail and doesn't take days

to harden ready for the next coat / colour.

My 'go to' solution (pun not intended) has become the Model Color range by the Spanish firm AV (Acrylicos Vallejo). These are water-based acrylic colours mainly intended for the military modelling fraternity and are supplied in small (17ml) 'eye dropper' bottles. There's a vast range of colours and they are reasonably easy to obtain in the UK from hobby shops that sell military kits and models.

I also use alcohol-based acrylics from Tamiya and MR Colour (though the later are far more difficult to find).

With the Vallejo paint you can dispense a drop or two of colour onto a cheap plastic artist's pallet and then brush paint. I've been using brushes with shaped (triangular) handles that don't roll around on the bench / tray. The smallest I generally use is a 10/0 and the largest a 1 (for large areas).

The Vallejo paints flow smoothly and generally cover in one thin coat, though two coats may be needed if you're overpainting an intense colour – and always, always, use a good quality spray primer, applied as one or more thin coats, before you start applying colour. It may take longer but it's worth it. Brushes clean up easily with water and hand soap.

I've now built the RailNScale Model T Ford shown in the last issue and a photo is below. I'm happy with the result but close up photography is a cruel sport! I opted to build the open version and, of course, it can be any colour you like...



As long as it's black

Also illustrated are a pair of KR200 'bubble cars.' These were built from resin kits from a Japanese maker called YSK (Available online from HobbyLink Japan

<https://hlj.com/1-150-scale-kr200-ysk-00283>

for about £3.50 - £4.00)



A brace of KR200s

The KR200, better known outside Germany as the Messerschmitt bubble car, was designed by Fritz Fend, a builder of invalid carriages, which, in powered form, were selling to non-disabled folks as a cheap and economical transport in post war Germany. I'm not sure if they ever sold in the USA but – Rule 1 applies!

I've also included a couple of pictures of models built from the RailNScale kits I mentioned last issue. Here, Inspector Maigret waits with his Citroen 7CV official car.



To headquarters - and fast

The new Range Rover is proudly shown for the first time.



Like a Land Rover but...

Also to be seen is one of those new fangled E Type Jaguars and a Morgan three wheeled sports car (both GEM / Fleetline white metal kits of uncertain age).



Just right for Cannes



But it's got four wheels!

All the glazing on these models was done using Deluxe Materials 'Glue and Glaze' apart from the model T which has a piece of clear styrene stuck in place with 'Glue and Glaze'.

Now I know the purists are going to jump down my throat for mixing scales (1:160, 1:150 and 1:148) but can you really see the difference?

All these models were brush painted using a mixture of Vallejo and Tamiya acrylics and as I said earlier, close up photography shows up every little imperfection and mistake, including ones not normally visible to the naked eye. At least that's my story and I'll stick to it!

## ***Meals on Wheels***

Bill Hamilton Turner writes

'A dining-only train is fairly rare. But a dining-only train with kitchen car and bar car on a narrow-gauge railway is about as unusual as you can get! Luckily for my family and me we have one on the doorstep in the Isle of Man.

Opened in 1873, the Isle of Man steam railway, including much of the rolling stock, has been largely preserved. In the last ten years, some of carriages have been converted to dining and kitchen cars.

The resulting novelty ride combined with good and varied menus have ensured the popularity of the dining train.

Passengers have a choice of types of dining at various times. For instance, there is the Friday commuter train offering bacon baps



on the way into work, and bar service on the way home: a pleasant way to start the weekend.

The Sunday lunch service offers a three-course lunch with table service for both food and drinks. The afternoon tea service comprises sandwiches, scones and cake with a choice of tea or coffee.

And then there's the dinner trains which have three variations: Pie and chips, a 3-course menu, or the curry night.

At the furthest point, passengers can get off, stretch their legs or pop into the pub for 30 minutes. Then it's all aboard for the return journey when dessert and tea/coffee is served. The train journey is deliberately slow and gentle. While you have the main course, it stops; this allows the passengers to enjoy wonderful views of the countryside and out to sea while they eat.

Lots of fun ways to have your meals on wheels.

Bill H-T.'

### ***Reminder – Convention 2020***

The dates will be Friday 6th – Sunday 8th March 2020

Hotel charges are:-

For Fri - Sat £117.00 per person (Includes dinner Friday, breakfast and dinner Saturday and breakfast Sunday)

Extra nights are

Thursday £53.00 per person  
Sunday £42.50 per person

Booking forms have been sent out with this issue and will be sent again later in the year.

### **Upcoming Events**

Mech Models are holding their Americana Open Weekend (in conjunction with Black Diamonds) on Saturday 1<sup>st</sup> June (10 a.m. to 5 p.m.) and Sunday 2<sup>nd</sup> June (10 a.m. to 4.00 p.m.). Admission is £3 (includes a free tea or coffee) and the event promises layouts, traders, free parking, hot and cold refreshments and a display of Harley-Davidson motorcycles. The venue is Unit 9, Lancaster Park, Newborough Road, Needwood, Burton on Trent, Staffs, DE13 9PD

If you know of local events that might be of interest to members – let me know in good time and I'll see what I can do.

You can reach me on

[ralph.snelling@googlemail.com](mailto:ralph.snelling@googlemail.com)

(that's the best method) or by snail mail to 109 Henderson Road, Southsea, PO4 9JE. I look forward to being inundated with responses!

The next issue will cover August / September and I would like to receive material for publication by 21<sup>st</sup> July if possible.